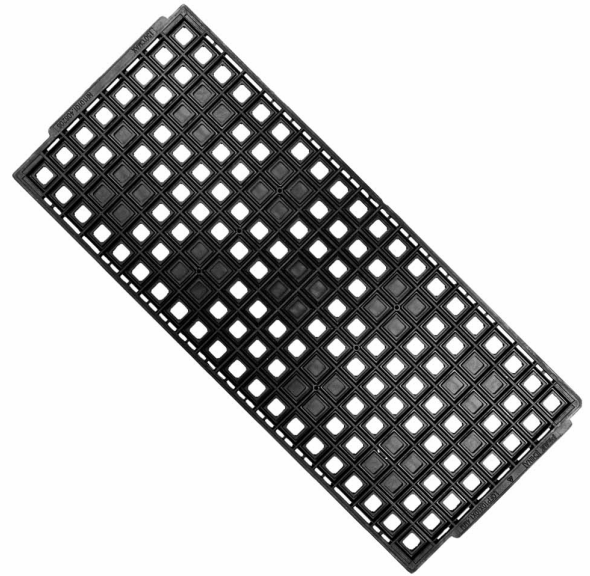


PRODUCT

Waffle Trays - LQFP

TECHNICAL DATASHEET

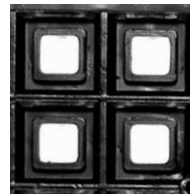
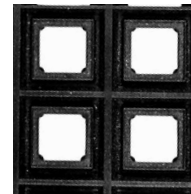
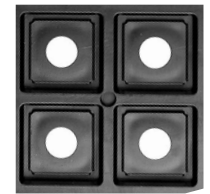
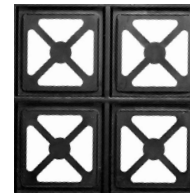
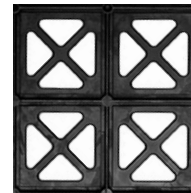

DESCRIPTION

Manufactured to meet stringent JEDEC global standards, the waffle tray design enables integrated circuits to be handled safely and securely during the various stages of manufacturing, testing, and shipping.

All JEDEC waffle trays have the same “X” and “Y” dimensions and are easily stacked for storage and transportation.

APPLICATIONS

- Assembly and testing
- Shipping and storage
- Manufacturing processes
- Pick and place automation

CELL STYLES
030-0054

030-0055

030-0056

030-0283

030-0348


PRODUCT CODE	CELL SIZE (mm)	MATRIX	USABLE CELLS	MAX HEAT (°C)	QUANTITY
030-0054	7 x 7 x 1.4	10 x 25	210	150	Each
030-0055	10 x 10 x 1.4	8 x 20	122	150	Each
030-0056	12 x 12 x 1.4	7 x 17	108	150	Each
030-0283	20 x 20 x 1.4	5 x 12	52	135	Each
030-0348	28 x 28 x 1.4	4 x 9	30	150	Each

To request a quotation or for more information, please call **+44 (0)1473 836200**
 email info@antistat.co.uk or visit www.antistat.co.uk

IMPORTANT: This data sheet and its contents (the "Information") belong to Antistat or are licensed to it. No licence is granted for the use of it other than for information purposes in connection with the products to which it relates. No licence of any intellectual property rights is granted. The Information is subject to change without notice and replaces all data sheets previously supplied. The Information supplied is believed to be accurate but Antistat assumes no responsibility for its accuracy or completeness, any error in or omission from it or for any use made of it. Users of this data sheet should check for themselves the Information and the suitability of the products for their purpose and not make any assumptions based on information included or omitted. Liability for loss or damage resulting from any reliance on the Information or use of it (including liability resulting from negligence or where Antistat was aware of the possibility of such loss or damage arising) is excluded. © 2024 Antistat.