

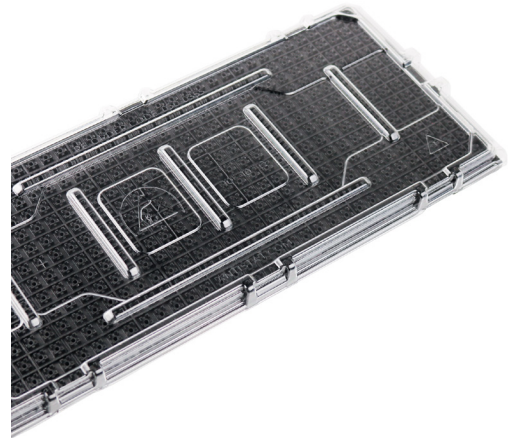
PRODUCT

Clear JEDEC Tray Cover with Black Foam

TECHNICAL DATASHEET

DESCRIPTION

Clear static dissipative tray lid made from antistatic PET with a dissipative low density polyethylene foam. Designed for the safe handling and transport of products.



FEATURES

- Lid material: Antistatic PET
- Foam: Dissipative low density Polyethylene
- Maximum product protection
- Exceptional ease of use
- Universal - works with all JEDEC trays



TECHNICAL DETAILS

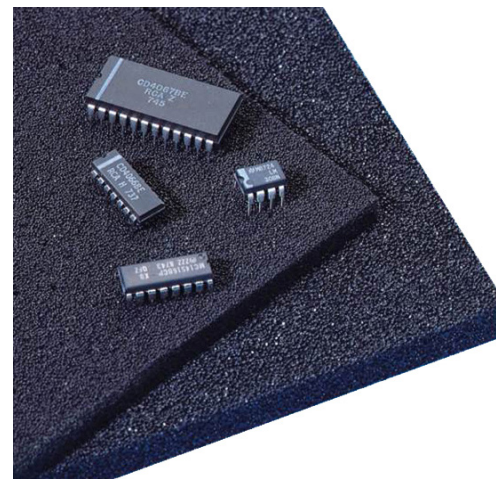
PROPERTIES	RESULTS
Material	Antistatic PET
Surface Resistance Two point probe method: ANSI/ESD STM11.13-2021	$1 \times 10^8 - 1 \times 10^{10} \Omega$



To request a quotation or for more information, please call **+44 (0)1473 836200**
email info@antistat.co.uk or visit www.antistat.co.uk

IMPORTANT: This data sheet and its contents (the "Information") belong to Antistat or are licensed to it. No licence is granted for the use of it other than for information purposes in connection with the products to which it relates. No licence of any intellectual property rights is granted. The Information is subject to change without notice and replaces all data sheets previously supplied. The Information supplied is believed to be accurate but Antistat assumes no responsibility for its accuracy or completeness, any error in or omission from it or for any use made of it. Users of this data sheet should check for themselves the Information and the suitability of the products for their purpose and not make any assumptions based on information included or omitted. Liability for loss or damage resulting from any reliance on the Information or use of it (including liability resulting from negligence or where Antistat was aware of the possibility of such loss or damage arising) is excluded. © 2024 Antistat.

Dissipative Low Density Polyethylene Foam



TECHNICAL DETAILS

PROPERTY	TEST STANDARD	UNITS	RESULTS
Apparent Density Skin/Skin	BS EN ISO 7214:2012	kg/m ³	(nominal) 32
Cell Size (Cell Diameter)	Internal	mm	0.8
Compression Stress-Strain 25% compression 50% compression	BS EN ISO 7214:2012 25 mm cell-cell	kPa	86 155
Tensile Strength Tensile Elongation	BS EN ISO 7214:2012	kPa %	365 53
Compression Set 25% comp., 22hr, 23°C ½ hr recovery 24 hr recovery	BS EN ISO 7214:2012	% set	10 5
Shore Hardness OO Scale	BS EN ISO 868:2003		61
Recommended maximum operating temperature*	Internal	°C	100

Volume Resistance	ANSI/ESD STM.11.12 - 2021	10 ⁷ - 10 ⁹ Ω
Surface Resistance	NSI/ESD STM.11.11 - 2021	10 ⁷ - 10 ⁹ Ω

PRODUCT CODE	DESCRIPTION	TRAY SIZE (MM)	FOAM SIZE (MM)
030-0355	Clear JEDEC Tray Cover with Black Foam	322.60 x 135.90	305 x 127 x 6

To request a quotation or for more information, please call **+44 (0)1473 836200**
 email info@antistat.co.uk or visit www.antistat.co.uk

IMPORTANT: This data sheet and its contents (the "Information") belong to Antistat or are licensed to it. No licence is granted for the use of it other than for information purposes in connection with the products to which it relates. No licence of any intellectual property rights is granted. The Information is subject to change without notice and replaces all data sheets previously supplied. The Information supplied is believed to be accurate but Antistat assumes no responsibility for its accuracy or completeness, any error in or omission from it or for any use made of it. Users of this data sheet should check for themselves the Information and the suitability of the products for their purpose and not make any assumptions based on information included or omitted. Liability for loss or damage resulting from any reliance on the Information or use of it (including liability resulting from negligence or where Antistat was aware of the possibility of such loss or damage arising) is excluded. © 2024 Antistat.